

Biomarkers

ChemPartner



ChemPartner has developed cutting edge technologies to provide excellent services for your drug discovery programs. Our staff members possess biotechnology & pharmaceutical R&D experience to understand your needs and know how to meet your demands.



Nikon 90i

By working with us using biomarker strategies, our customers are able to benefit

significantly from our well developed technologies and move their projects forward faster. For example, NanoPro platform enables quantification of protein phosphorylation in very small amount of samples, such as biopsies & stem cells. FISH allows the detection of HER2 amplification in cell lines as well as in patient samples. Overall, we strive to provide excellent service to support your drug discovery and translational medicine needs.



ABI Real-time PCR

Contact

998 Halei Road #5 Zhangjiang Hi-Tech Park Pudong Shanghai, China 201203

China: +86 21 5132 0088

USA: +1 650 419 9974

Europe: +45 4586 9000

Japan: +81 03 5403 6975

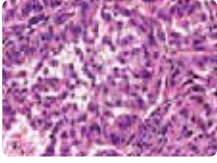
contact@chempartner.com

www.chempartner.com

Molecular Pathology Service

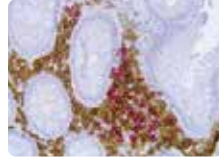
Histopathology

- FFPE & Cryosection
- H&E staining
- Special Staining



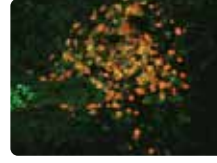
IHC

- Assay development
- Semi-quantification
- Double IHC
- IHC on tissue microarray



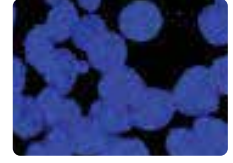
Immunofluorescence

- Standard protocols
- Assay development
- Double IF



FISH

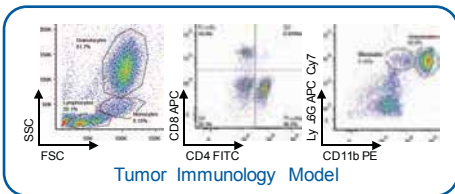
- Deletion
- Amplification
- Translocation



Flow Cytometry Service

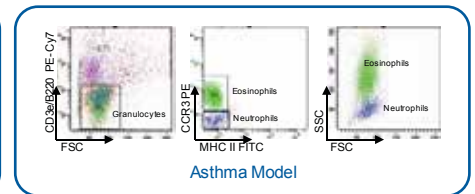
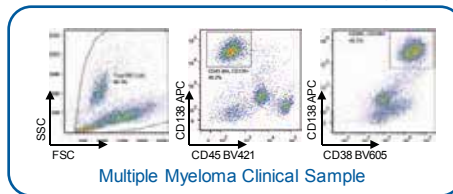
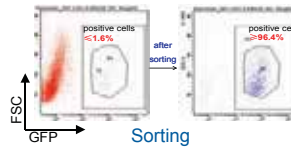
Biomarkers Analysis

- Tumor immunology model
- Clinical cancer samples
- Inflammation model



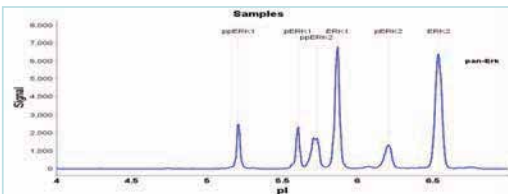
High speed sterile sorting

- Stable/transient over expression cells, cancer stem cells.



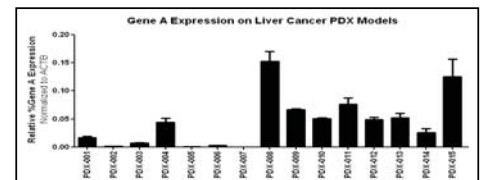
NanoPro Platform and Quantitative PCR

Phospho- and non phospho-protein detection



Name	pl	%Area
ppERK	5.207	7.11
pERK1	5.207	6.96
ppERK	5.719	11.85
ERK1	5.864	26.47
pERK2	6.202	7.43
ERK2	6.536	40.17

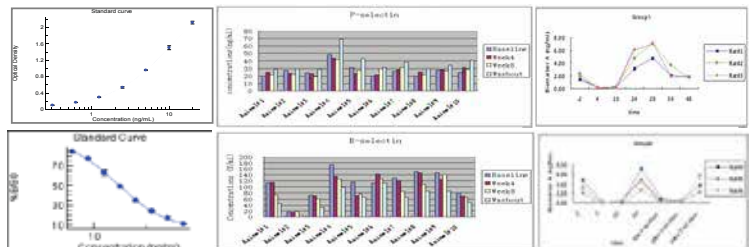
Taqman Analysis



Large Molecular Bioanalytical Service

Classical ELISA Platform

- Biomarker detection using commercial kits
- Assay development from scratch
- Clinical sample detection under GLP regulation



Multiplex Analytical Platform

- Luminex platform
- MSD platform

