



INFLAMMATION AND IMMUNOLOGY

ChemPartner's immunologists are highly experienced in the evaluation of immune cell activation/proliferation/differentiation, cytokine release, signal molecules, receptor binding, and cell-cell interaction. We have helped hundreds of our global pharmaceutical and biotech clients with drug discovery for cancer immunotherapy and autoimmune diseases.

CAPABILITIES

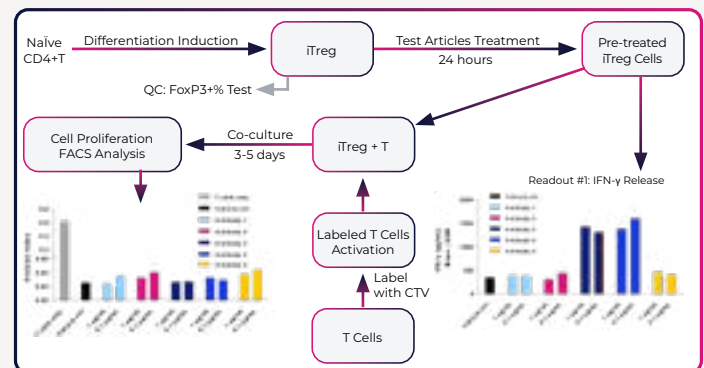
IN VITRO ANALYSIS PLATFORMS

- Primary immune cell *in vitro* assays
- Whole blood/PBMC stimulation and cytokine release assay
- Mixed lymphocyte reaction (MLR) assay
- CMV antigen recall assay
- Tumor/T cell co-culture assay
- T cells (total, CD4+, CD8+) activation and proliferation assays
- Th subsets differentiation (Th1/2/17/Treg) assays
- Treg suppressive assay (mouse, human)
- T cells killing assay (bi-specific antibody)
- OT-I mice T cell and ova-expressing tumor cell co-culture
- B cell activation assay in human blood and PBMCs/rat/mouse
- NK cell cytotoxicity assay/*in vitro* NK cell killing assay (human version K562)
- M1/M2 macrophage polarization assay
- Macrophage/T cell co-culture assay
- Phagocytosis assay
- Basophil activation assay in human blood
- JAK/STAT signaling assays in human blood
 - FACS and AlphaLISA analysis
 - PD (phosphor-STATs detection in immune cells)
- CD73-A2aR signaling assay
- NLRP3 inflammasome activation assay
- Receptor occupancy assay
- LPS-induced cytokine release in whole blood/human PBMC/THP-1 cells
- TLR7/8-induced cytokine release assay in human PBMCs
- STING antagonist assay (human/mouse version)

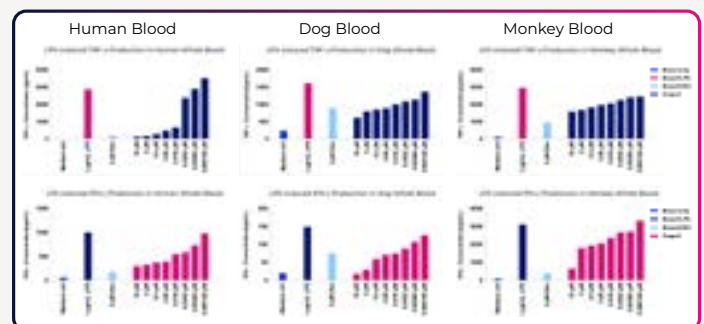
READOUTS

- Cytokine release (ELISA/Luminex/ELISPOT)
- Transcriptome (Quantigene)
- Signaling molecule (AlphaLISA)
- Multi-color flow cytometry

HUMAN iTREG SUPPRESSIVE ASSAY



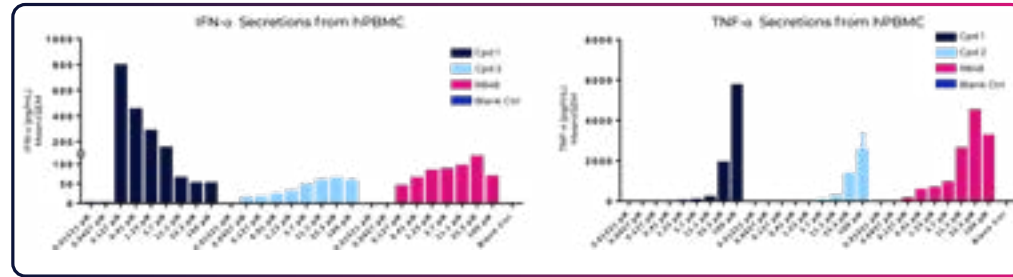
LPS-INDUCED CYTOKINE RELEASE IN WHOLE BLOOD



CASE STUDIES

TLR7/8-INDUCED CYTOKINE RELEASE ASSAY IN HUMAN PBMCs

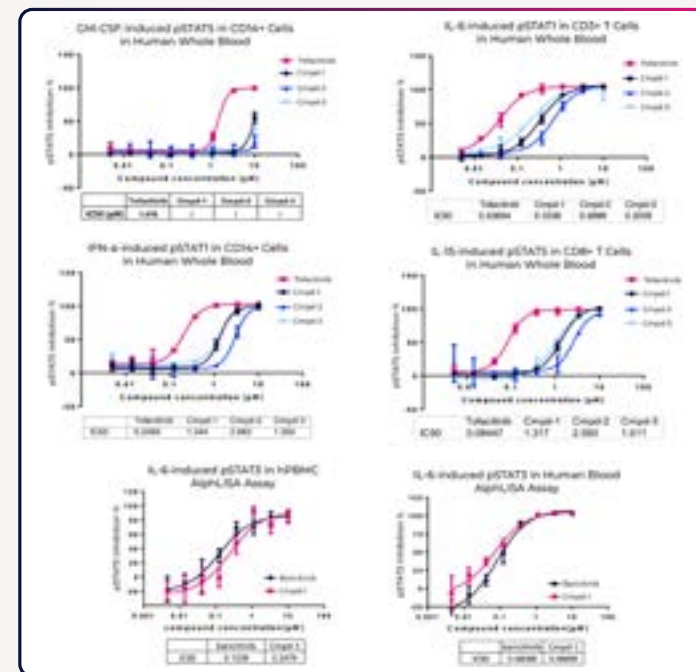
- Fresh human PBMCs treated with test articles
- R848 (Resiquimod), which induced TLR7/8 activation, served as positive control
- Supernatant harvested for TNF- and IFN- ELISABE, DDI, Ocular PK, etc.



JAK SIGNALING SCREENING WITH VALIDATED PBMCs/BLOOD PATHWAYS

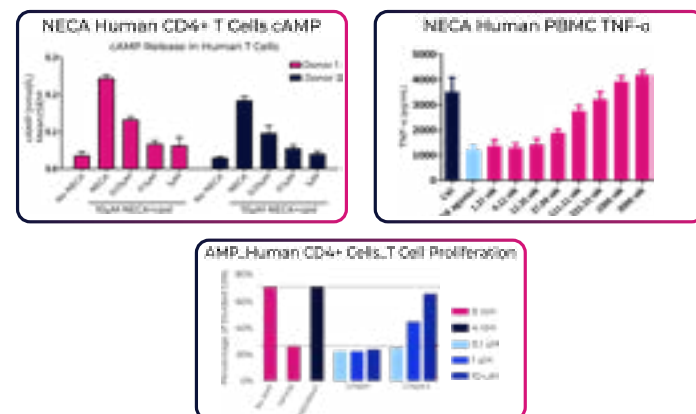
STIMULUS	KINASE SELECTION	PHOSPHO-PR. READOUT	TARGET CELL POPULATION
hIL -2	JAK1/JAK3	STAT5	CD4+/CD8+ T cells
hIL -4	JAK1/JAK3	STAT6	CD4+ T cells
hIL -6	JAK1/JAK2	STAT1	CD3+/CD4+ T cells
hIL -12	JAK2/TYK2	STAT4	CD3+ T cells
hIL -15	JAK1/JAK3	STAT5	CD3+/CD4+/CD8+ T cells
hIL -23	JAK1/JAK2	STAT3	CD3+/CD161+ cells
IFNα	JAK1/TYK2	STAT1	CD123+HLA -DR +BDCA+ pDCs
IFNα	JAK1/TYK2	STAT3	CD3+ cells
IFNγ	JAK1/JAK2	STAT1	CD4+/CD8+ T cells
GM-CSF	JAK2/JAK2	STAT5	CD14+/CD33+

JAK SIGNALING ASSAY IN HUMAN BLOOD_FACTS AND ALPHALISA ANALYSIS



A2AR SIGNALING RELATED ASSAYS

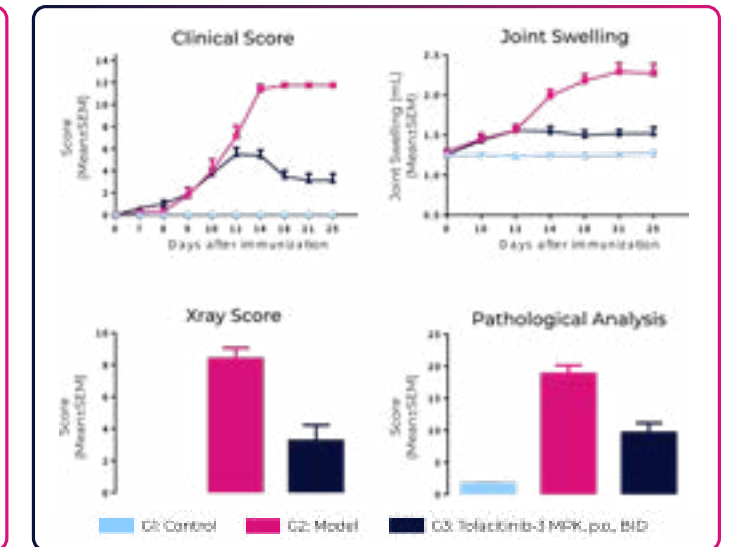
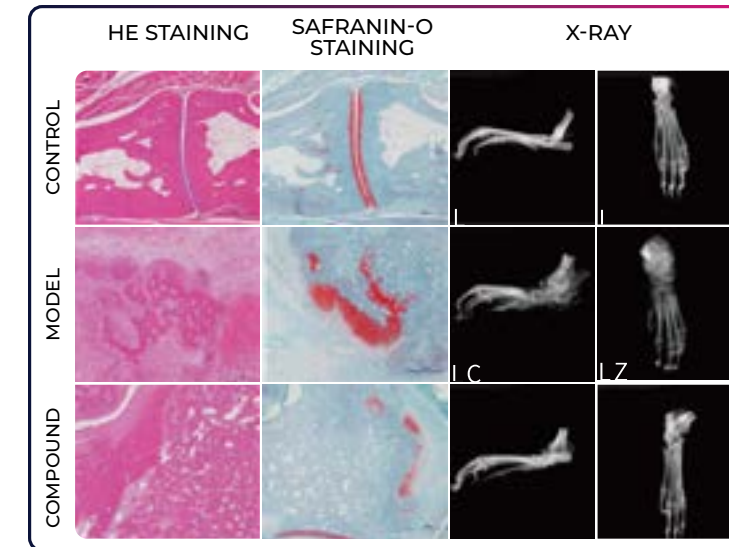
STIMULUS	TARGET	READOUT	CELL TYPE	
NECA	A2AR	Cytokines (ELISA)	IFN-γ	mouse splenocyte
			IL-2	hPBMC/human T cells/mouse splenocyte
		cAMP (TR-FRET)	TNF-α	hPBMC/human T cells
			pCREB (Flow cytometry)	human T cells/mouse T cells
AMP	CD73	Cytokines (ELISA)	hPBMC/mouse splenocyte/whole blood	
		T cell proliferation (flow cytometry)	hPBMC/CD4+ T cell	



CASE STUDIES

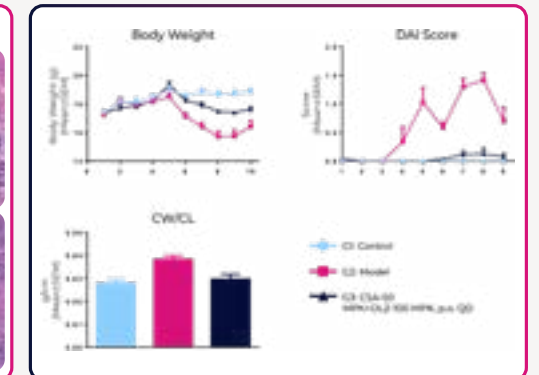
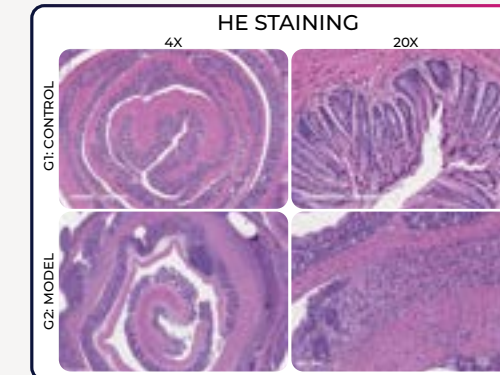
ADJUVANT-INDUCED ARTHRITIS (AIA) IN RATS

- Animal: Lewis rat, female, 180-200g
- Immunization: CFA
- Readouts: body weight, joint swelling, clinical score, pathology, x-ray



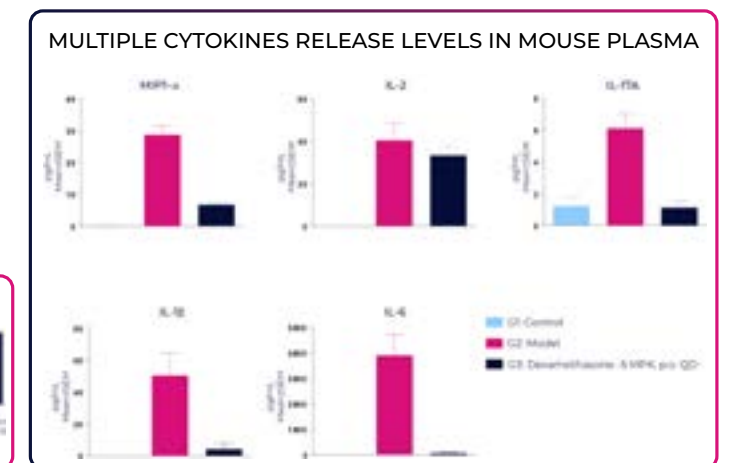
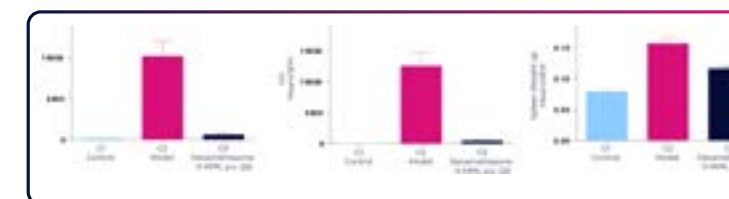
ADJUVANT-INDUCED ARTHRITIS (AIA) IN RATS

- Animal: C57BL/6 mice
- Modeling: treatment with DSS in drinking water
- Readouts: body weight, clinical score(DAI), colon weight/length, pathology



CON-A-INDUCED SYSTEMIC INFLAMMATION IN MICE

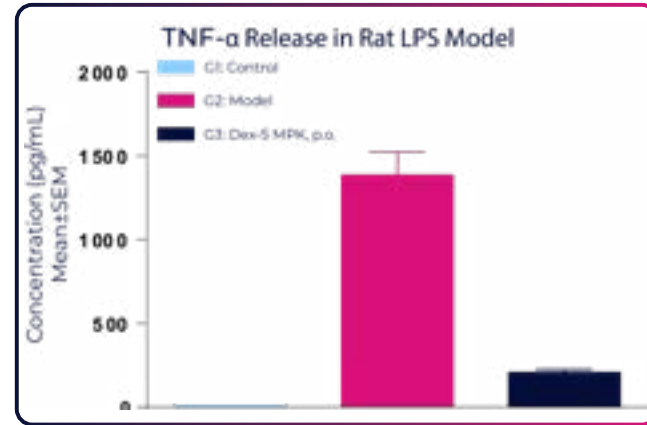
- Animal: BALB/c mice, female, 9-11 weeks
- Modeling: ConA injection through tail veins
- Reference drug: Dexamethasone
- Readouts: body weight, liver/spleen weight, ALT and AST level in serum, inflammatory cytokines release in plasma



CASE STUDIES

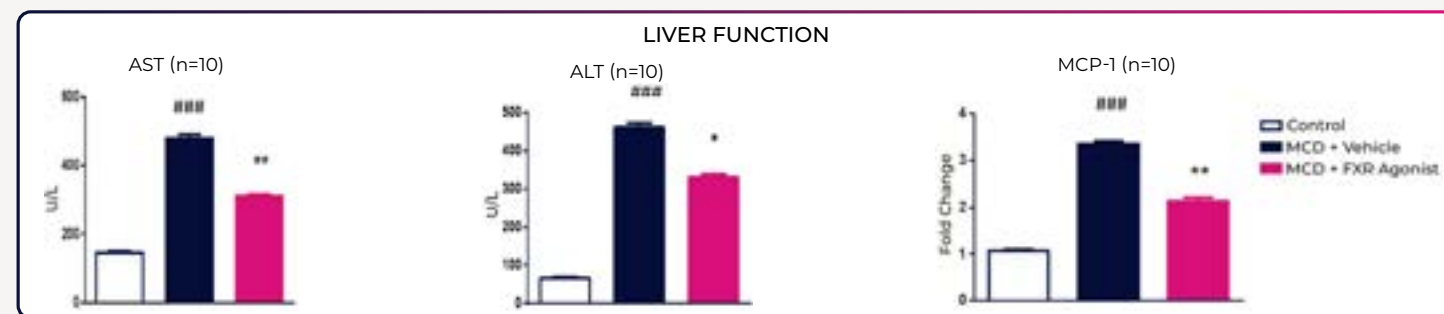
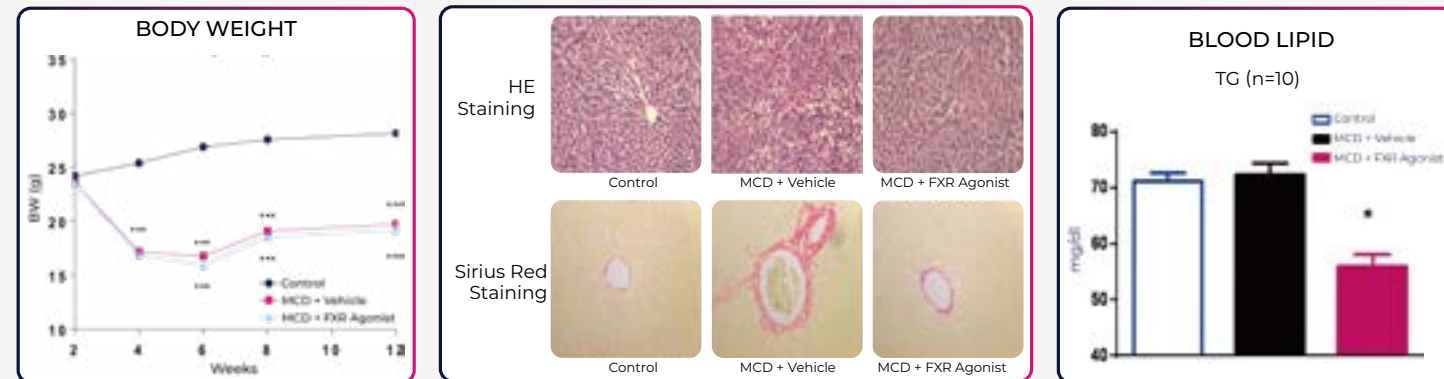
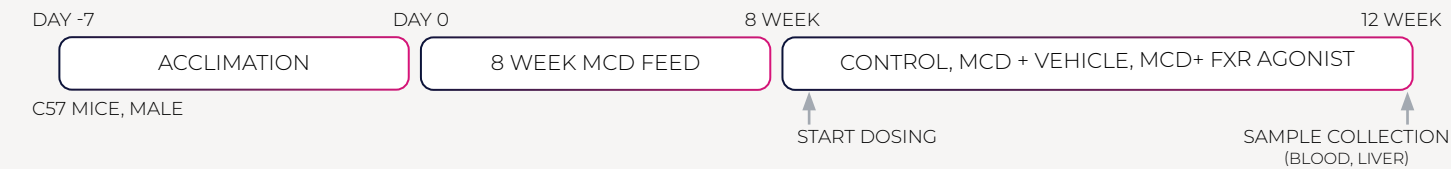
LPS-INDUCED SYSTEMIC INFLAMMATION IN RATS

- Animal: Lewis rat, female, 180-200g
- Immunization: CFA
- Readouts: body weight, joint swelling, clinical score, pathology, x-ray



METHIONINE AND CHOLINE DEFICIENT (MCD) DIE T-INDUCED NON-ALCOHOLIC STEATO HEPATITIS MODEL (NASH) IN MICE

- The MCD-fed mice showed typical pathological features, including lipid degeneration and liver fibrosis
- Significant increases in ALT and AST levels in the MCD-fed mice showed liver injury
- The liver inflammation marker MCP-1 increased in the MCD-fed group
- Treatment with FXR agonists alleviated steatohepatitis score (DAI), colon weight/length, pathology



IN VIVO DISEASE MODELS

RESPIRATORY DISEASE

- OVA-induced asthma in mice
- Bleomycin-induced lung fibrosis in mice

RHEUMATOID ARTHRITIS

- Collagen induced arthritis in rats (CIA)
- Adjuvant induced arthritis in rats (AIA)

MULTIPLE SCLEROSIS (MS)

- MOG-induced EAE in mice
- PLP-induced EAE in mice

SKIN-RELATED DISEASE

- IMQ induced psoriasis in mice
- IL-23 induced hyperplasia in mice
- Passive cutaneous anaphylaxis in mice (PCA)
- DNFB/Oxa induced delayed type hypersensitivity in mice (DTH)

INFLAMMATORY BOWEL DISEASE (IBD)

- DSS-induced IBD in mice (acute)

SYSTEMIC INFLAMMATION OR OTHER

- LPS-induced cytokine release in mice/rats
- Systemic inflammation in mice (Con A)

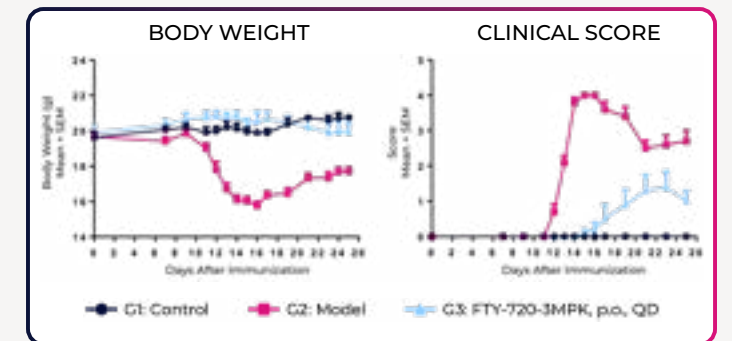
METABOLIC DISEASES

- HFD induced obesity in mice
- Diabetes in db/db mice
- Diabetes nephropathy in db/db mice

CASE STUDIES

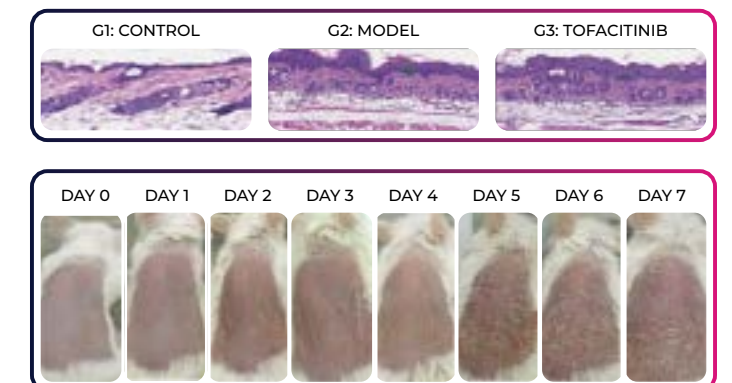
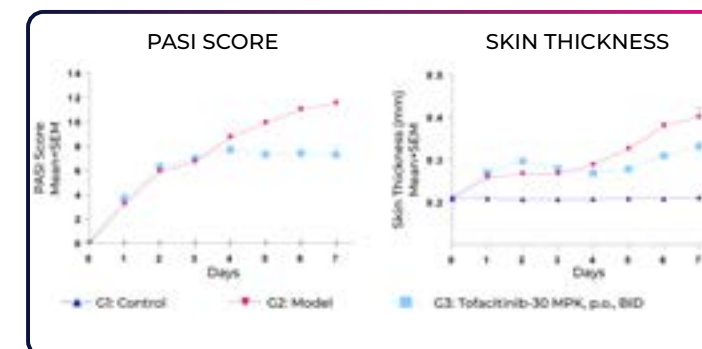
MOG35-55-INDUCED EAE IN C57BL/6 MICE

- Animal: C57BL/6 mice, female
- Immunogen: Myelin Oligodendrocyte Glycoprotein (MOG35-55) peptide
- Readouts: body weight, clinical score, pathology



PSORIASIS: IMQ INDUCED PSORIASIS IN MICE

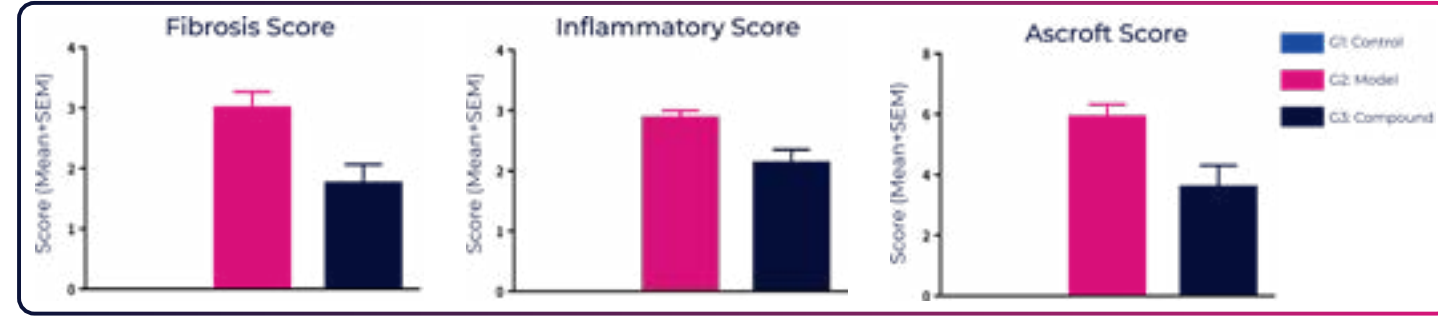
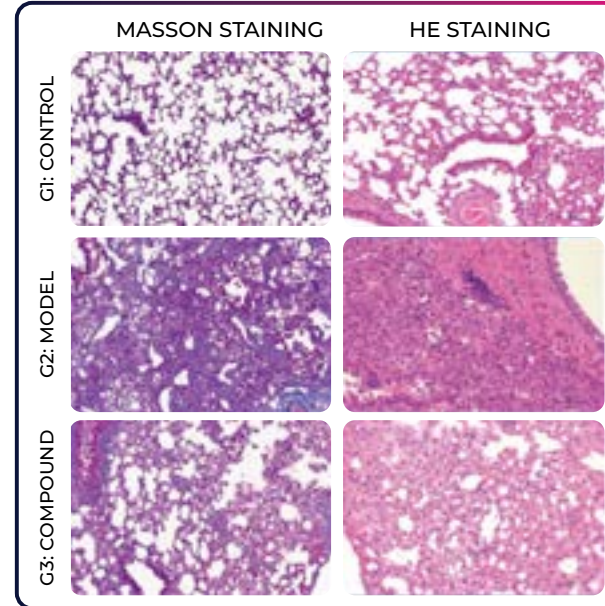
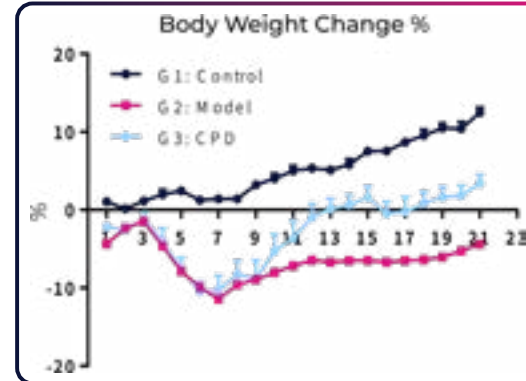
- Animal: BALB/c mice, female
- Readouts: body weight, PASI score, skin thickness, pathology
- PASI score criteria: Erythema, scale, and thickness
- 0: no; 1: mild; 2: moderate; 3: severe; 4: marked



CASE STUDIES

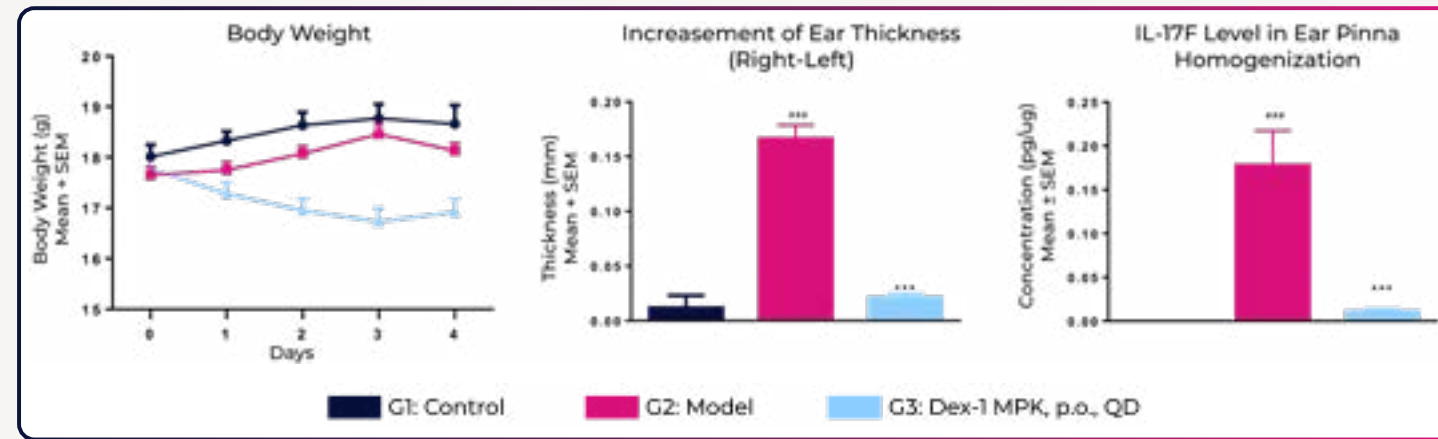
BLEOMYCIN INDUCED LUNG FIBROSIS MODEL IN MICE

- Animal: C57BL/6 mice, male, 8 weeks
- Modeling: BLM, i.t.
- Readouts: body weight, pathology (Mason and HE staining), inflammatory cells counts in BALF, total collagen (optional)



IL-23-INDUCED EAR EDEMA MODEL IN MICE

- Animal: C57BL/6 mice, female, 6-8 weeks
- Sensitization: rmlL-23, s.c.
- Reference drug: Dexamethasone, p.o., QD
- Readouts: body weight, ear thickness, IL-17F level in ear pinna homogenization



EX VIVO ANALYSIS PLATFORMS

READOUTS

- Frequency of immune cell subpopulation
- Expression of immune checkpoints and markers
- Soluble factors
- Receptor occupancy %
- PD/biomarker design, method development, method validation and clinical sample analysis

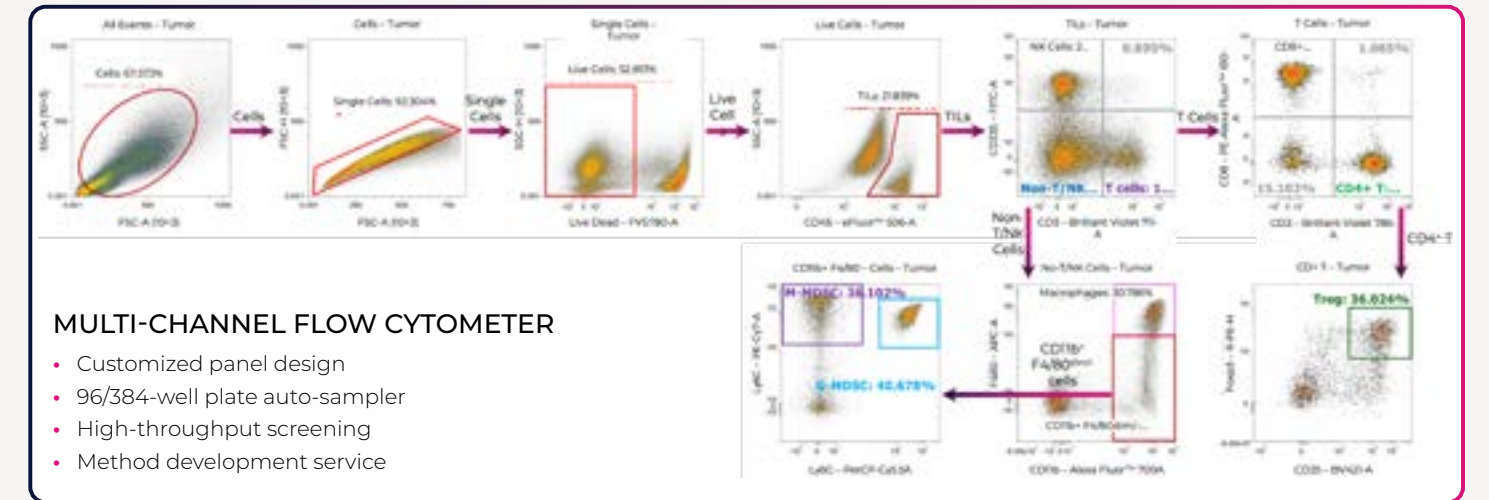
METHODS

- Flow cytometry
- Luminex/Quantigene
- ELISA, ELISpot
- Sequencing
- Western blot, qPCR

TISSUES

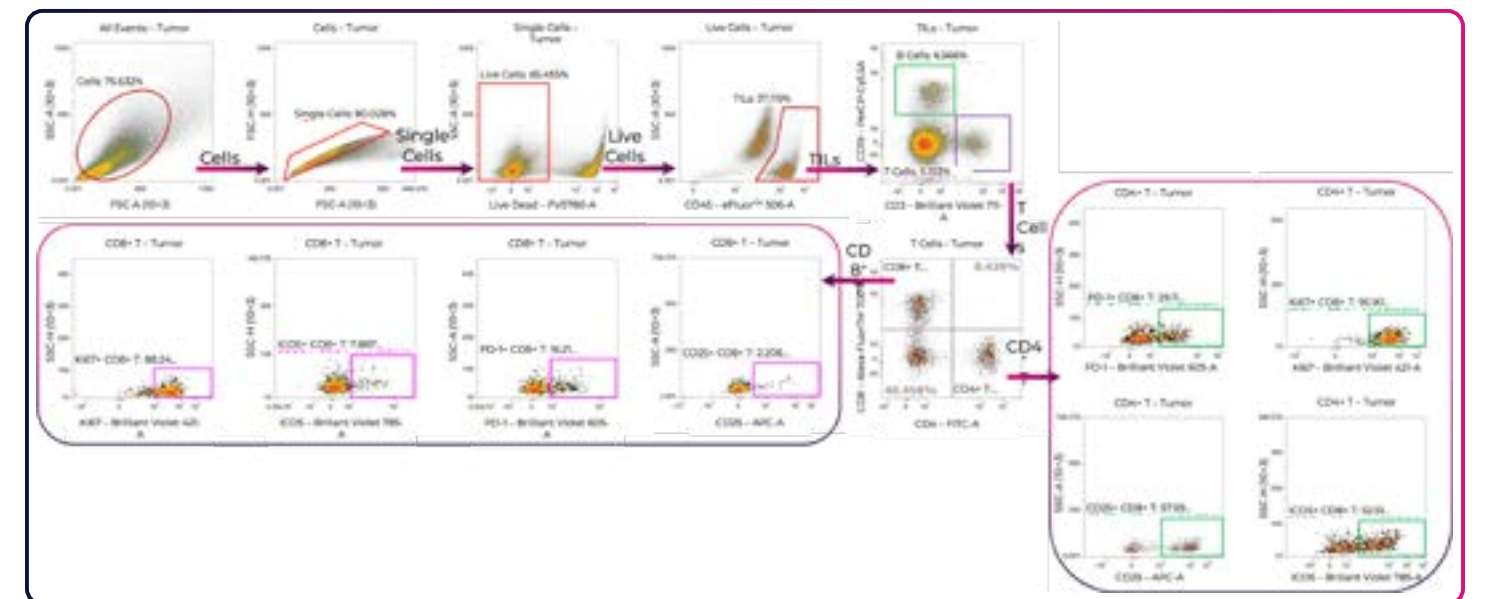
- Tumor, brain, liver, kidney
- Spleen, lymph nodes, thymus
- BALF, peritoneal cells
- Peripheral blood
- Bone marrow

MULTI-COLOR FLOW CYTOMETRY CAPABILITIES



TILS ANALYSES_ T CELL CHECKPOINT/ ACTIVATION EVALUATION PANEL

- Tumor processing with gentle MACS dissociator, then remove RBC
- Multi-color staining followed by flow cytometric analysis



MULTI-COLOR FLOW CYTOMETRIC ANALYSIS

ITEM	IMMUNE CELL POPULATION	
Immune Cell Typing	Mouse/Rat/Human	Lymphocytes: T cells, Treg, B cells, NK cells, memory T, effector T, naive T... Myeloid cells: monocytes, macrophages, DCs, pDC, MDSC, granulocytes...
	Monkey	T cells, Treg, B cells, NK cells, monocytes, DCs, HSC, plasma cells
	Dog	T cells, Treg, B cells, monocytes, granulocytes
	Phosphorylation	p-CREB, p-STAT3, p-STAT6
Biomarker Analysis	Checkpoint	PD-1/PD-L1, Tim-3, Lag-3, CTLA-4, TIGIT
	Co-stimulator	4-1BB, OX40, CD86, CD80, ICOS
	Intracellular cytokine	IFN- γ , IL-2, IL-4, IL-17A, IL-10, TNF- α , GranzymeB
	Proliferation/Activation	IFN- γ , IL-2, IL-4, IL-17A, IL-10, TNF- α , GranzymeB

ELISA

COMMERCIAL VENDORS

- Abcam
- R&D
- MBL
- Abclonal

TYPES OF SAMPLES

- Plasma/serum
- Cell culture supernatant
- Tissue homogenates
- Cell lysates

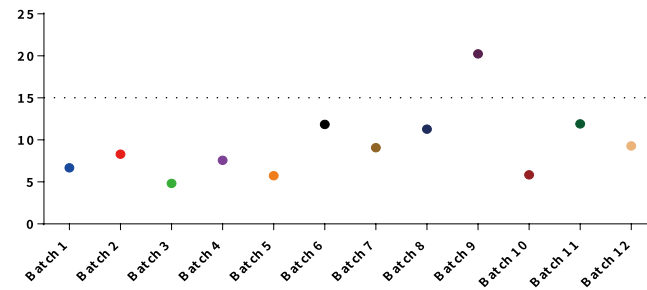
VALIDATED ANALYTES POOL

- Human, Mouse, rat
- IL-2, IL-6, IL-10, TNF- α , IFN- γ , IP-10, CXCL-12, MCP-1, PCSK9

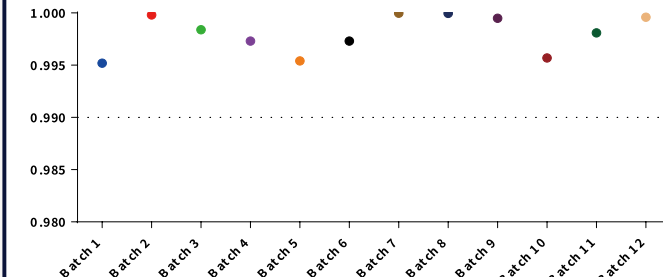
STANDARD WORK FLOW

- A quick pilot to check matrix effect/determine dilution factor
- Formal test
- QC criteria: Linear equation R² < 0.9900, intra and inter-plate standard signal CV tracking

Summary of inter-plate standard CV _ Human IFN γ



Summary of R² _ Human IFN- γ



LUMINEX

CAPABILITIES

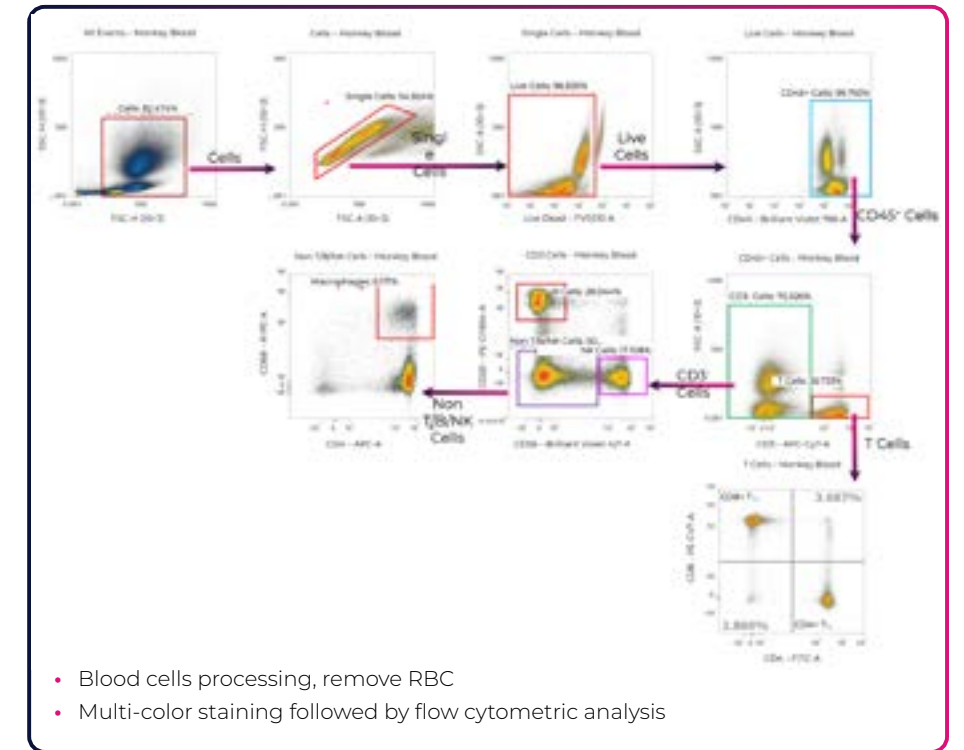
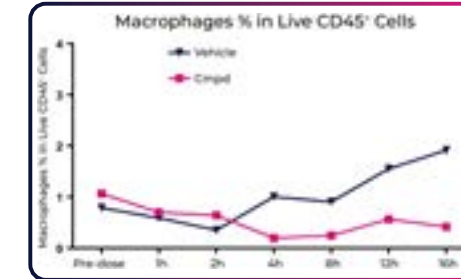
- Customized commercial kits
- Multiplexing with up to 80(2D) / 500(3D) analytes per well
- Validated analytes pool
 - 347 human targets
 - 108 mouse targets
 - 36 monkey targets
 - 17 Rat targets
- QC criterial:
 - Inner- and inter-plate standard signal CV tracking

EQUIPMENT

- Bio-Plex® 200
- Luminex 200™
- FLEXMAP 3D

WHOLE BLOOD PHENOTYPING IN CYNO MONKEY

CELL TYPES	READOUT LIST
T cells	Live CD45 + CD3 + cells
CD8 + T	Live CD45 + CD3 + CD4 - CD8 + cells
CD4 + T	Live CD45 + CD3 + CD4 + CD8 - cells
B cells	Live CD45 + CD3 - CD20 + CD56 - cells
NK cells	Live CD45 + CD3 - CD56 + CD20 - cells
Macrophages	Live CD45 + CD3 - CD56 - CD20 - CD11b + CD68 + cells

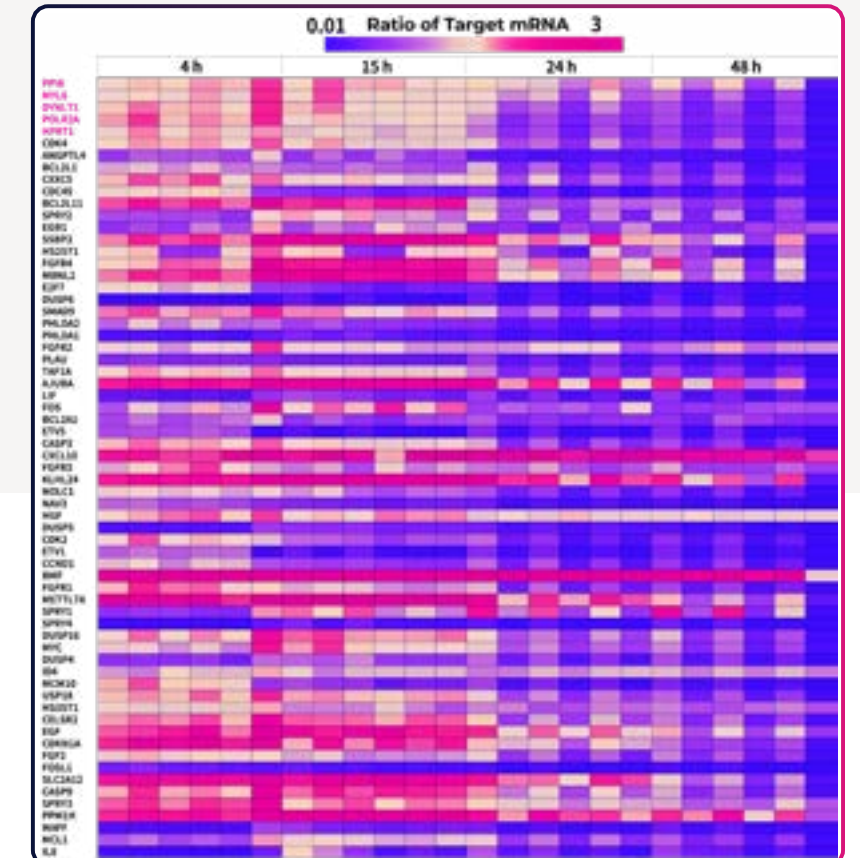
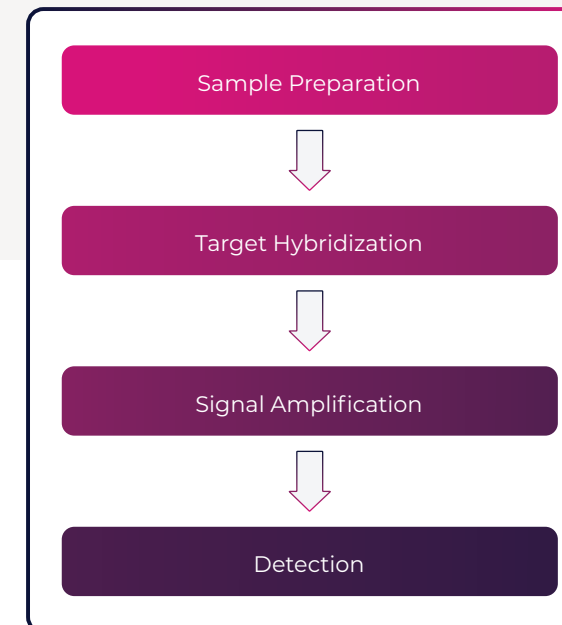


- Blood cells processing, remove RBC
- Multi-color staining followed by flow cytometric analysis

QUANTIGENE

MULTIPLEX MRNA PROFILING

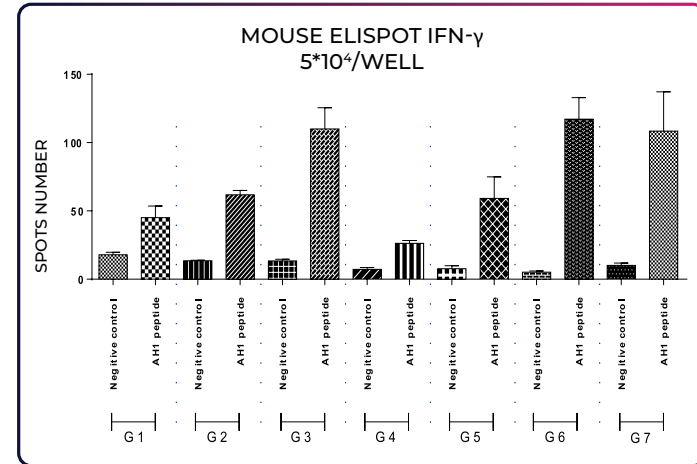
- Customized panel/probes (over 15,000 validated genes)
- Probe design service from ThermoFisher
- Multiplexing with up to 500 mRNA targets per sample



ELISPOT

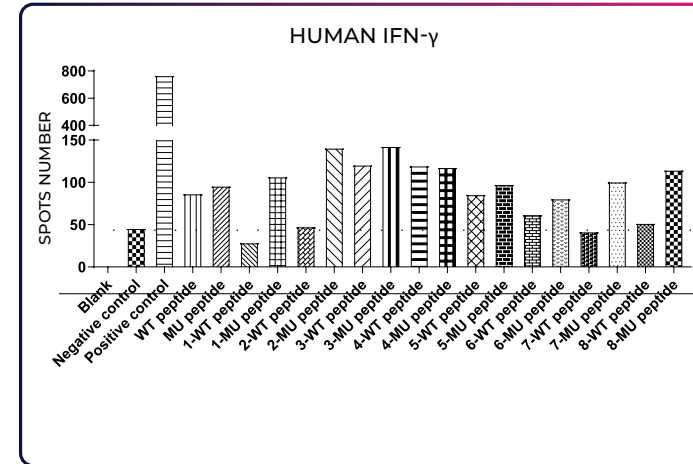
APPLICATIONS

- Mouse splenic or blood immunocytes immunogenicity evaluation
- Human fresh PBMC sourced antigen-specific T cell detection
- Neo-antigen screening by using donor contributed T cells and DCs



ANALYTES

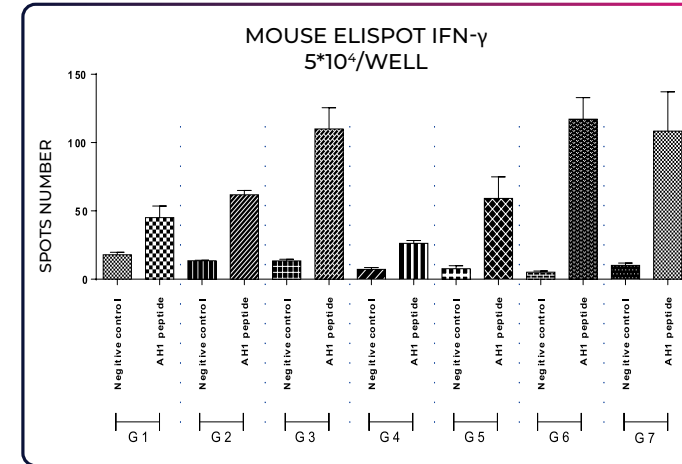
- Human IFN-g, Gran-b, IL-1a, GM-CSF, IL-6...
- Mouse IFN-g, IgG, IgE, IgA, IL-4, IL-2...



ELISPOT

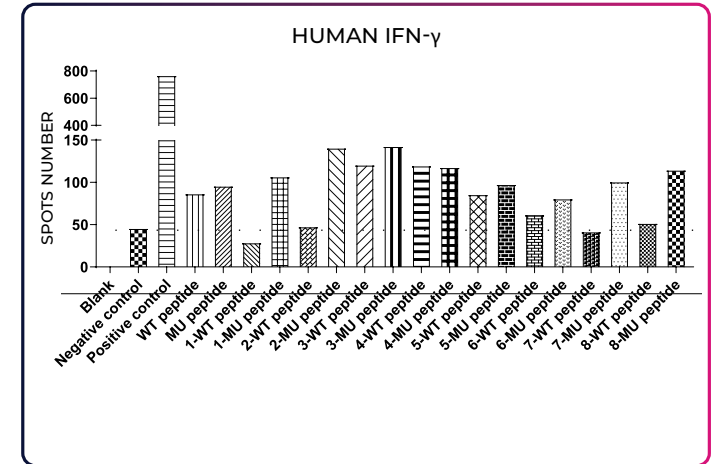
APPLICATIONS

- Mouse splenic or blood immunocytes immunogenicity evaluation
- Human fresh PBMC sourced antigen-specific T cell detection
- Neo-antigen screening by using donor contributed T cells and DCs

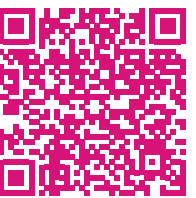


ANALYTES

- Human IFN-g, Gran-b, IL-1a, GM-CSF, IL-6...
- Mouse IFN-g, IgG, IgE, IgA, IL-4, IL-2...



LEARN MORE AT [CHEMPARTNER.COM/SERVICES/BIOLOGY-PHARMACOLOGY/IMMUNOLOGY-AND-INFLAMMATION/](https://chempartner.com/services/biology-pharmacology/immunology-and-inflammation/)



LEARN MORE