

# KINASE SCREENING

## CAPABILITIES

### BROAD SERVICE SCOPE

- Assay development
- High-throughput screening
- Compound screening for SAR
- Selectivity panel profiling
- Enzyme kinetics
- Compound mechanism of action
  - Mode of inhibition and  $K_i$
  - Compound reversibility
  - $K_{on}$  and  $K_{off}$
  - $K_1$  and  $K_{inact}$

### KINASE TARGET CLASSES

- Cytoplasmic tyrosine kinases
- Receptor tyrosine kinases
- Serine threonine kinases
- Others

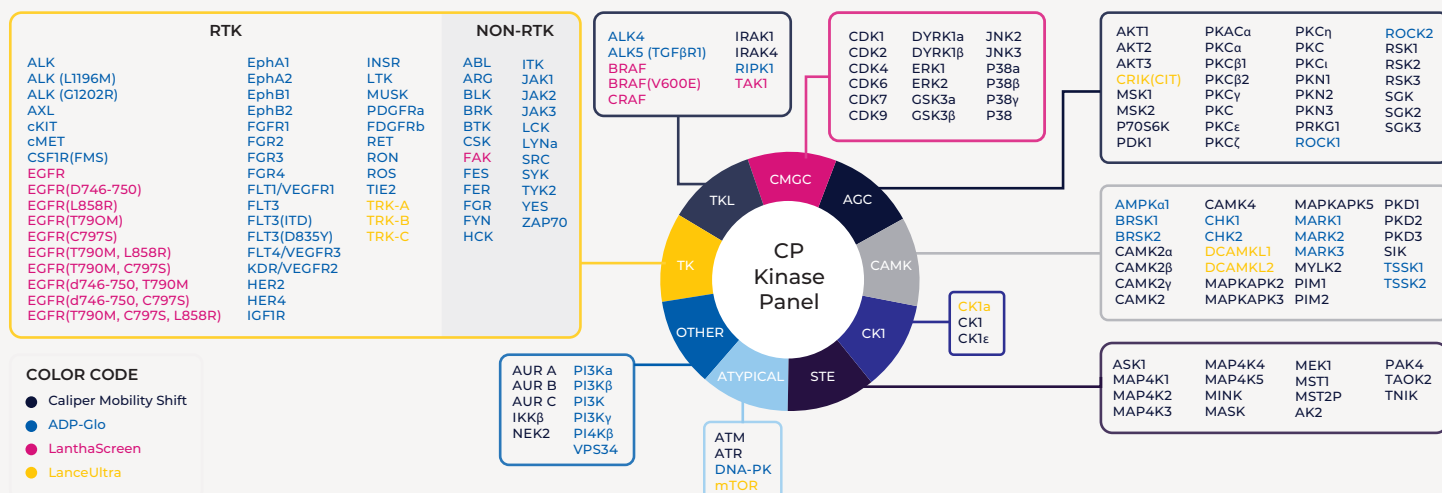
### SERVICE HIGHLIGHTS

- High performance on data quality
- Fast turnaround time
- Custom assay development design

### MULTIPLE ASSAY PLATFORMS

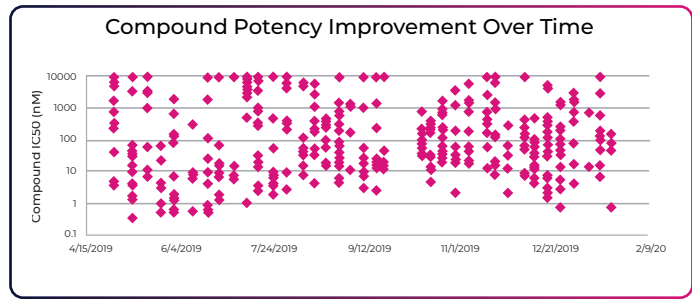
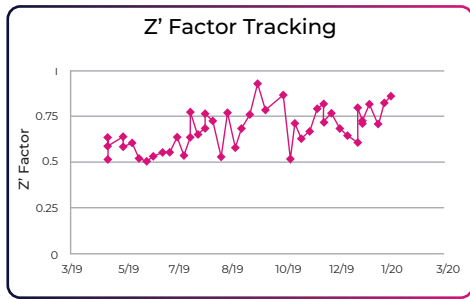
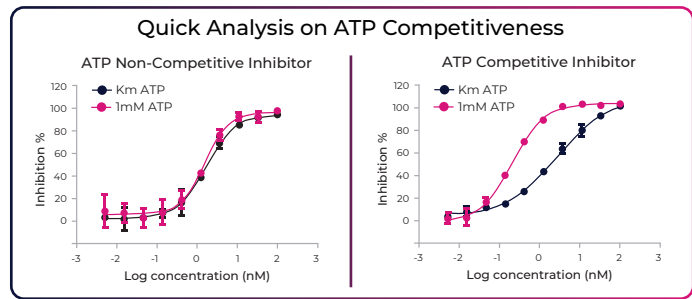
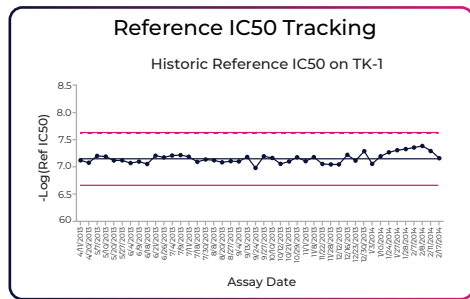
- Caliper mobility shift
- TR-FRET
- Luminescent

## DRUG DISCOVERY IN KINASE

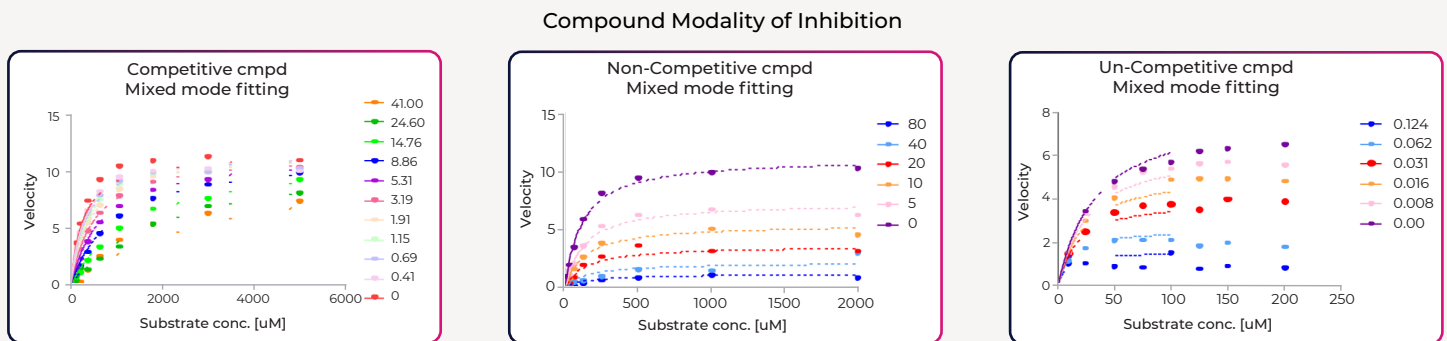


All assays listed above are developed and validated at ChemPartner. For targets not listed, please inquire.

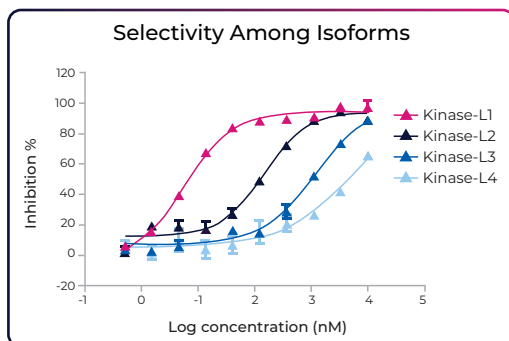
# HIGH QUALITY DATA AND FAST TURNAROUND TO SUPPORT SAR



# MECHANISM OF ACTION RESEARCHES ON ENZYMOLOGY



# KINASE PANEL PROFILING FOR COMPOUND SELECTIVITY



LEARN MORE AT [CHEMPARTNER.COM/SERVICES//BIOLOGY-PHARMACOLOGY/IN-VITRO-BIOLOGY/KINASES/](https://chempartner.com/services/biology-pharmacology/in-vitro-biology/kinases/)